

Thursday nights at PAMM


Every Thursday evening, enjoy happy hour food and drink specials on the terrace, and a variety of evening lectures, performances and entertainment. Every third Thursday of the month, join us for Poplife Social, a lively music series with art-making and more. pamm.org/calendar for listings.

Free Second Saturdays


A free family day, with art-making and other child-friendly activities from 1–4pm.

Connect with #PAMM

Sign up to receive PAMM's calendar of events: pamm.org/calendar.

 /perezartmuseummiami

 @pamm

 pampics

Tell us what you enjoyed about your visit!

  tripadvisor*

General Museum Hours

Friday, Saturday, Sunday, Monday, Tuesday: 10am–6pm

Thursday: 10am–9pm

Wednesday: Closed

PAMM is closed for Christmas Day and Thanksgiving Day

Admission

Members, Free

Adults, \$16

Seniors (62+ with ID), \$12

Youth (ages 7–18), \$12

Students (with ID), \$12

Children (under 6), Free

Active U.S. Military (with ID), Free

First Thursdays and Second Saturdays, Free

Free First Thursdays is made possible by Knight Foundation.

pamm.org/parking

Metromover: Museum Park station

Free Miami Trolley: Museum Park

Bike racks on site

Self-parking on-site as available (rates apply)*

Overflow parking at OMNI garage, 1645 Biscayne Blvd.

Reduced rate with proof of PAMM admission (take Metromover one stop).

*All subject to change. Event rates or special conditions may apply.

**PAMM garage is automated and cannot accommodate motorcycles, scooters or small vehicles.



1103 Biscayne Blvd.
Miami, FL 33132
305 375 3000
info@pamm.org
pamm.org

Accredited by the American Alliance of Museums, Pérez Art Museum Miami (PAMM) is sponsored in part by the State of Florida, Department of State, Division of Cultural Affairs, and the Florida Council on Arts and Culture. Support is provided by the Miami-Dade County Department of Cultural Affairs and the Cultural Affairs Council, the Miami-Dade County Mayor and Board of County Commissioners. Additional support is provided by the City of Miami and the Miami OMNI Community Redevelopment Agency (OMNI CRA). Pérez Art Museum Miami is an accessible facility. All contents ©Pérez Art Museum Miami. All rights reserved.

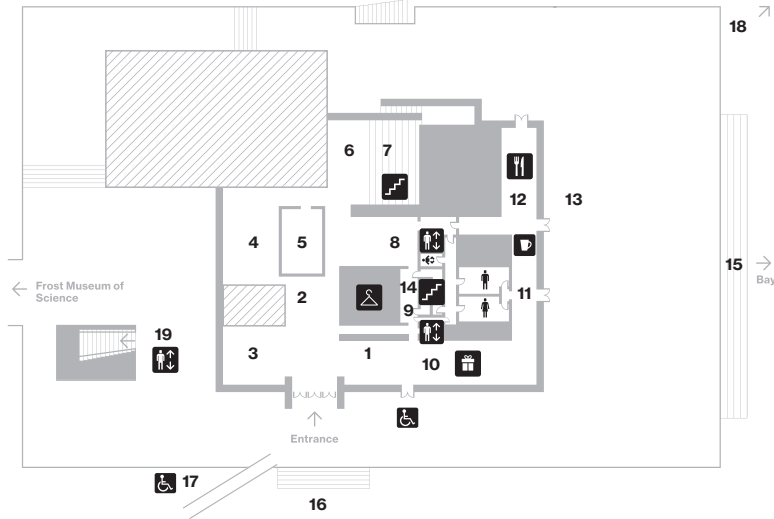


Pérez Art Museum Miami

Museum Map

English





*Elizabeth A. and Mitchell Taylor /
Jack Taylor Family Foundation*

1 Visitor Services Center

Experience more family fun with PAMM Family Packs! Check out a bag of artful fun, including pencil kits to bring out your inner artist, scavenger hunts to explore the galleries, at the visitor services desk.

Join PAMM and start enjoying the benefits of membership today! Members receive 10% off at PAMM Shop and Verde, and complimentary museum admission. Gift memberships are available at visitor services and at PAMM Shop.

Dorothy and Aaron Podhurst

2 Museum Lobby

Free daily public tours led by museum guides meet in the lobby at 11am, 12pm, 2:30pm, and Thursday evenings at 6:30pm. Tours in Spanish are available Saturdays at 2pm. Private group tours are available by reservation (rates and restrictions apply).

Papper Family

3 Gallery

Nedra and Mark Oren

4 Gallery

Bank of America

5 Gallery

Padma and Raj Vattikuti

6 Learning Theatre

Padma and Raj Vattikuti

7 Central Stair / Auditorium

Access the second floor from the central stair. When the auditorium is not in use, it remains open as a resting place for visitors to relax. Elevators and an alternate staircase are available when auditorium programming is in progress.

Lori and Milton Ferrell

8 Gallery

9 Bag Check / Lockers

We ask that you help protect the art on view by checking backpacks of any size, shopping bags, large handbags and umbrellas.

Ana Cristina and Edgardo

10 PAMM Shop

Shop a selection of furnishings, art books, handmade jewelry and unique gift items.

M. Thérèse Vento

11 Verde Café

Pick up a sandwich or coffee from Verde's grab and go, and enjoy a picnic on the terrace

Gorson Family Bistro

12 Verde restaurant

Enjoy waterfront dining at Verde. Open during general museum hours with a special brunch menu on Saturdays and Sundays, and dinner on Thursday evenings.

Pamela Garrison and R. Kirk Landon

13 Terrace

14 Staircase

Ambassador Paul and Trudy Cejas

15 Bayside Stair

Sari and Arthur Agatston

16 South Stair

Jeanne and Joseph Farcus Family

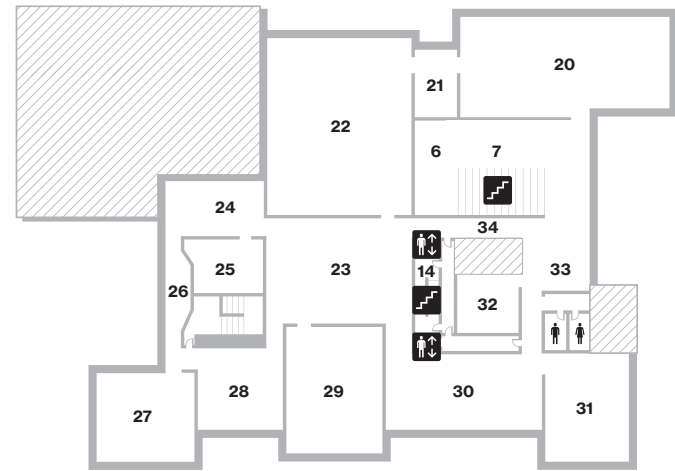
17 Ramp

Mary M. and Sash A. Spencer

18 Sculpture Garden

19 Parking Stair / Elevator

Parking payment kiosks are located in garage at the bottom of the parking stair and elevator.



M.B. Fernandez Family

20 Gallery I

Patricia and William Kleh

21 Gallery

M.B. Fernandez Family

22 Gallery II

23 Gallery

Gloria and Howard Scharlin

24 Gallery

25 Gallery

*Gail S. Meyers and
Andrew C. Hall*

26 Gallery

Diane and Robert Moss

27 Gallery

Nedra and Ron Kalish Gallery

28 Gallery

29 Gallery

Neerja Sethi and Bharat Desai

30 Gallery

*Rose Ellen Meyerhoff Greene
and Gerald Greene*

31 Gallery

Paresky

32 Gallery

The Rosenberg Family Foundation

33 Hall

34 Gallery Passage



Multimedia Art Guides

PAMM offers additional information and commentary about selected works throughout the museum. Visit pamm.org, on your personal mobile device and click on 'Guides' to select from a list of tours and multimedia, or look for this symbol on wall texts.

Photography and videography

Photography for personal use only is permitted unless otherwise noted. Check all cameras with removable lenses in the Bag Check. Photography is not permitted in some galleries including special exhibition galleries due to copyright restrictions. Commercial photography and videography must be pre-arranged through events@pamm.org.

Sketching

Visitors are welcome to sketch in the galleries. We ask that you use only pencil (no ink or paint, please) and keep sketchbooks to size 8½ × 11 inches (21.6 × 27.9 cm). Easels, stools, or sketching while sitting on the floor is not permitted.

Strollers

Baby strollers are permitted at all times, however please check oversized bags, food or drink accompanying stroller.

Help protect the art

Please do not touch the artwork on display. No smoking, food and drinks: Food and drinks are permitted only in the lobby and may not be carried into the galleries or other areas. Smoking is permitted in designated areas outside.

Accessibility

PAMM is an accessible facility. For more information contact, vs@pamm.org or call 786 345 5629

Free Wi-Fi available

